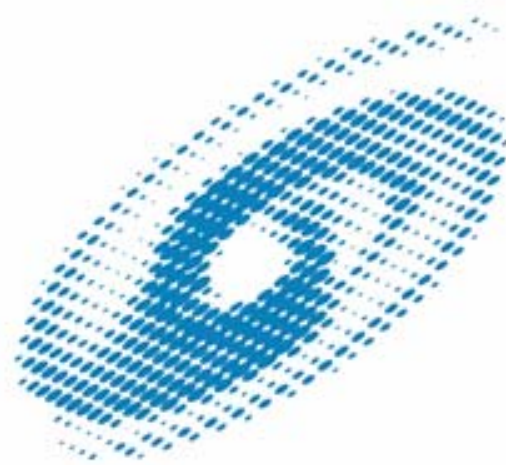


# Routinizing the Routine: Ubiquitous Sensing of Routine Patterns

John Leslie King



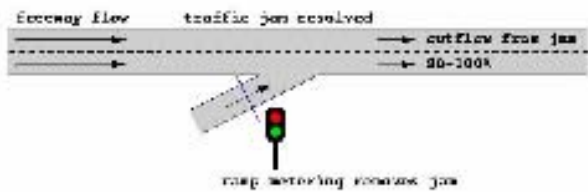
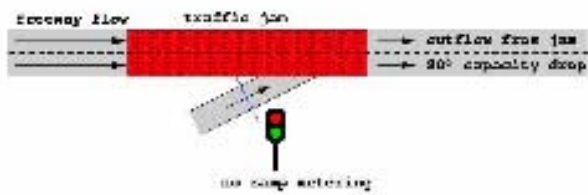
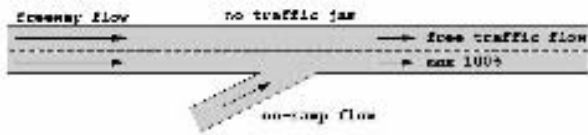
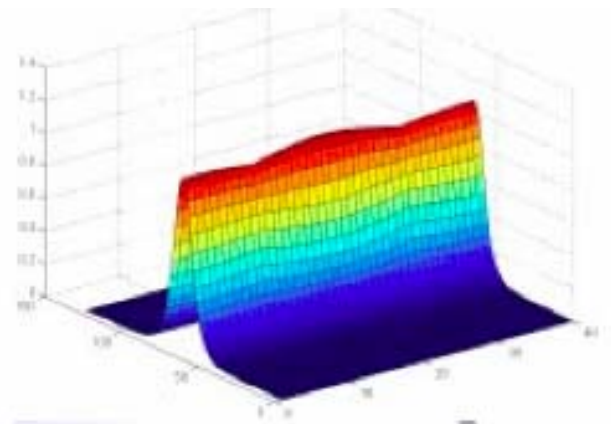
SCHOOL OF INFORMATION  
UNIVERSITY OF MICHIGAN



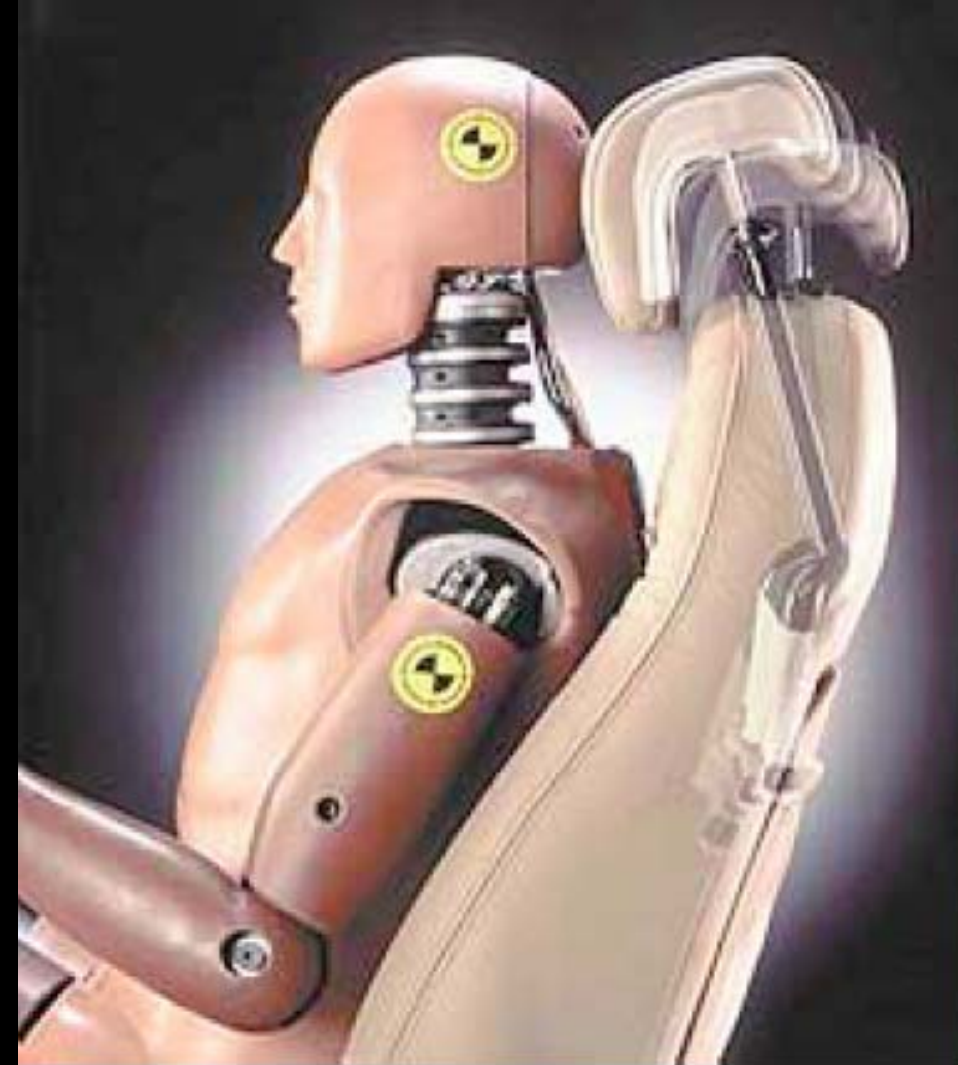
Early Buck Interconti Airport  
Wilton Clayton Flyway  
Bassett Rd

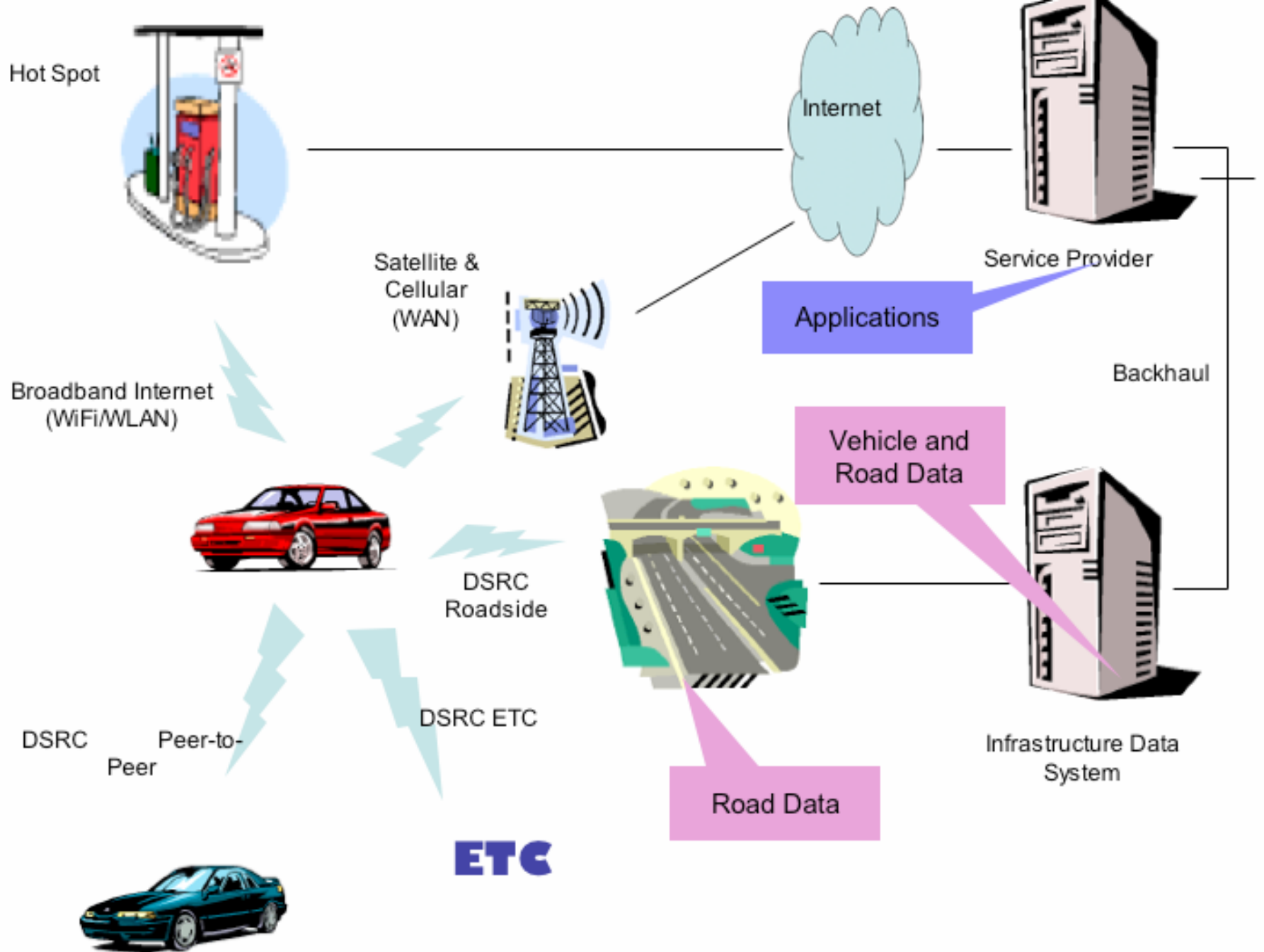
18

SPEED  
LIMIT  
65











Search ITS:

Go

#### Overview

What is ITS?

Technology Overview

#### Focus Areas

New Initiatives

Exploratory Initiatives

Other Program  
Activities

#### Foundational Framework

Architecture

Standards

Telecommunications

#### Deployment Support

Deployment Statistics

[Home](#) > [New Initiatives](#)

## Vehicle Infrastructure Integration (VII)

21,000 of the 43,000 deaths annually on America's highways are caused by roadway departure and intersection related incidents. Building on work previously done in the Intelligent Vehicle Initiative, the Vehicle Infrastructure Integration initiative will work toward deployment of advanced vehicle-vehicle and vehicle-infrastructure communications that could keep vehicles from leaving the road and enhance their safe movement through intersections.

- [Initiative Overview](#)
- [VII Public Meeting](#)
- [Related Areas of Interest](#)
- [Publications and Presentations](#)

### Contact

For more information about this initiative, please contact:

#### Bill Jones

Manager, Vehicle Infrastructure Integration Initiative



- [VII Concept of Operations](#)

**Fatalities**

42,815

**Fatality Rate**

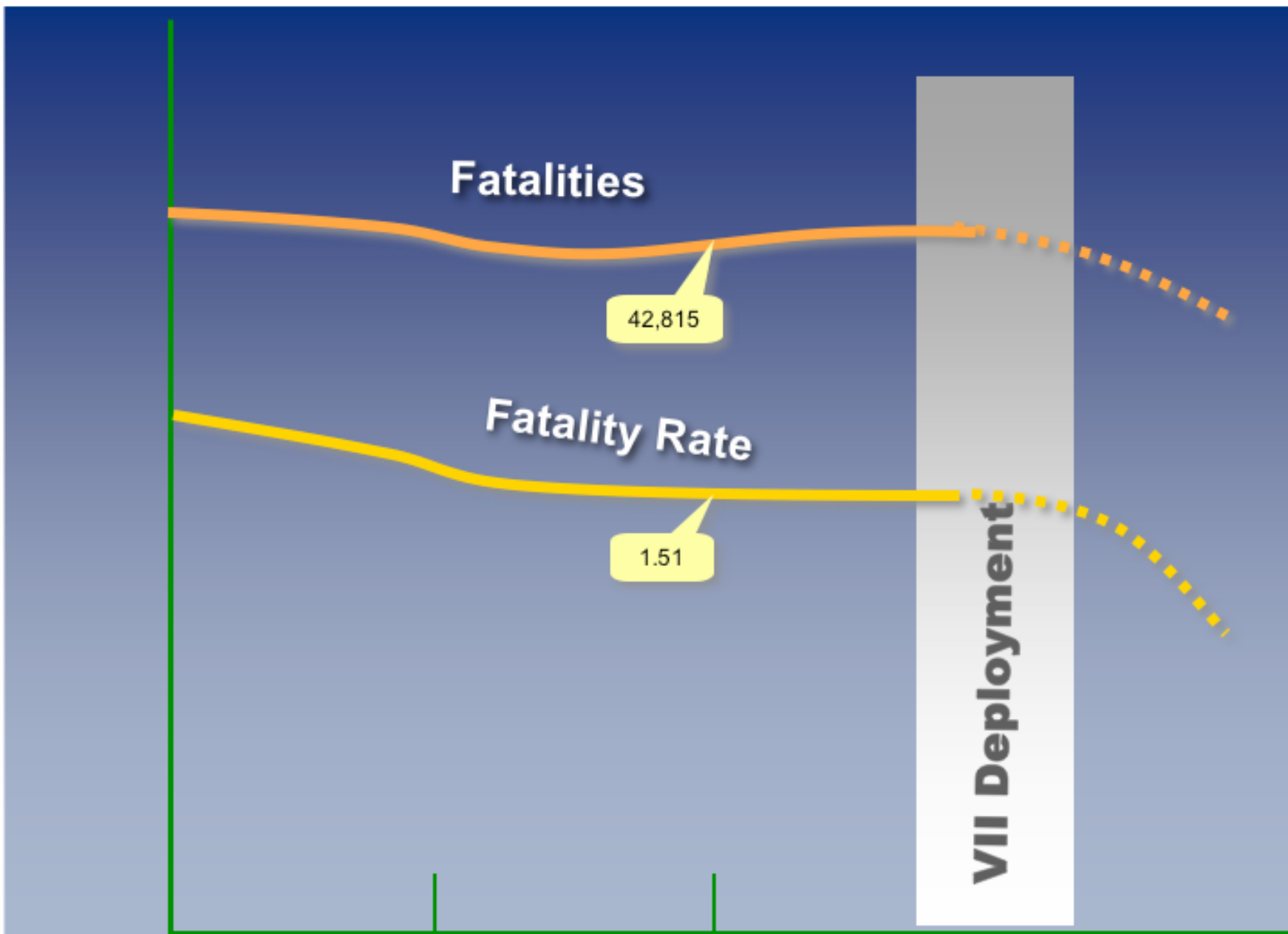
1.51

**VII Deployment**

1980

1990

2000





*USDOT -- FHWA, NHTSA*

*AASHTO (American  
Association of State  
Highway and  
Transportation  
Organizations) 10 state  
DOT's*

*Auto OEMs -- BMW,  
Daimler Chrysler, Ford,  
GM, Nissan, Toyota, VW*



**Insurance Industry**

STOP NOW



